

Austart Turbine Starters

ATS93 Series



Design Features

- Lubrication Free
- Infinite 360° Indexing of Inlet
- Field Serviceable with NO special tools
- Efficient Low Air or Gas Pressure Starting
- Rugged, Lightweight, All Metal Composition
- Self Balancing, Self Governing Turbine Wheel
- 30 - 175 psi Standard Operating Range

Key Features

at 100 psi

Weight 38.5 lbs

Torque 210 ft lbs

RPM 3600 RPM

Power 35 HP

Consumption 810 scfm

Decibels 108 Dba

Configurations Available

Rotation

Righthand (cw)

Lefthand (ccw)

Drive

Pre-Engaged

Inertia

Overhung Pinion



Exhaust

Harsh Environment Muffler

NPT Threaded Exhaust



Whether you are **Drilling** for oil, **Compressing Gas**, **Generating Power**, **Towing** materials or in any other industrial sector we can help you start your engines and leave the continual maintenance game behind.

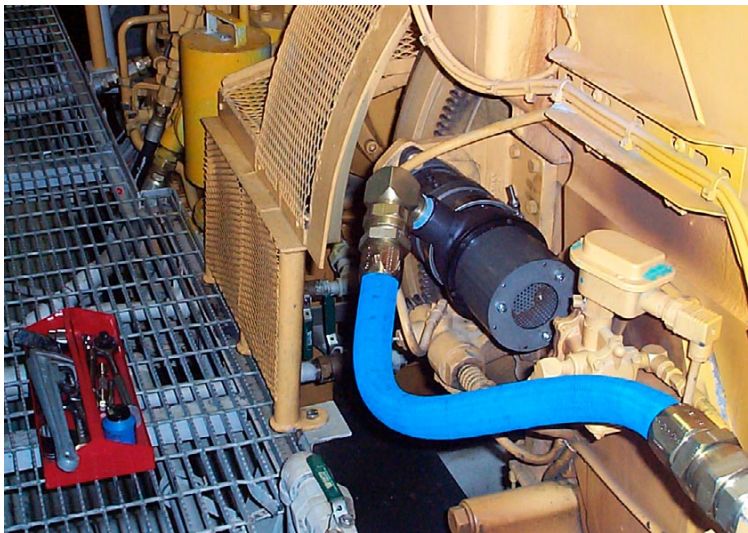


Engine Displacement

C.I.D.		Liter
1576 - 7000	Diesel	25 - 130
3154 - 14,000	Natural Gas	50 - 260

ATS93 Performance Data

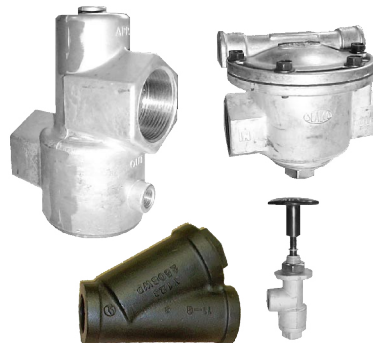
Pressure (psi)	Torque (max)	RPM (max)	HP (max)	Flow (scfm)
50	130	3100	18	560
75	160	3400	25	700
100	210	3600	35	810
125	250	3700	43	1050
150	310	3700	51	1310



Pictured: ATS93-0311 on Caterpillar 3606 marine engine

Accessories

- PB1250 Push Button
- RV1250 1.25" Relay Valve
- YS1250 1.25" Y Strainer
- BV1250 1.25" Ball Valve



Always use accessories equal to the size of the inlet or slightly larger to ensure proper flow characteristics.

Engine Selection Guide

Caterpillar

3606	ATS93-0311
G3612	ATS93-0311
G3616	ATS93-0311

CES Bessemer

GMX	ATS93-0311
GMSC	ATS93-0311

CES Superior

12SGT	ATS93-0311
16SGT	ATS93-0311

EMD

8-567	ATS93-0311
8-645	ATS93-0311
12-645	ATS93-0311

Fairbank Morse/Alco

12V-251	ATS93-0311
16V-251	ATS93-0311
38D-125	ATS93-0311

Waukesha

P9390G	ATS93-0311
12V-AT27G	ATS93-0311
16V-AT25G	ATS93-0311

This is only a partial list of engines. Contact the factory for more information.