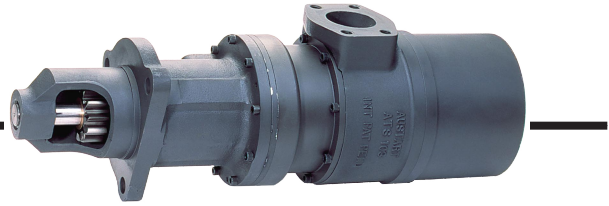


Austart Turbine Starters

ATS103 Series



Design Features

- Lubrication Free
- Infinite 360° Indexing of Inlet
- Field Serviceable with NO special tools
- Efficient Low Air or Gas Pressure Starting
- Rugged, Lightweight, All Metal Composition
- Self Balancing, Self Governing Turbine Wheel
- 30 - 175 psi Standard Operating Range

Key Features

at 100 psi

Weight 44 lbs

Torque 265 ft lbs

RPM 4600 RPM

Power 60 HP

Consumption 1100 scfm

Decibels 108 Dba

Configurations Available

Rotation

Righthand (cw)

Lefthand (ccw)

Drive

Pre-Engaged

Inertia



Exhaust

Harsh Environment Muffler

NPT Threaded Exhaust



Whether you are **Drilling** for oil, **Compressing Gas**, **Generating Power**, **Towing** materials or in any other industrial sector we can help you start your engines and leave the continual maintenance game behind.



Engine Displacement

C.I.D.		Liter
3050 - 15,000+	Diesel	50 - 250+
6100 - 30,000+	Natural Gas	100 - 500+

ATS103 Performance Data

Pressure (psi)	Torque (max)	RPM (max)	HP (max)	Flow (scfm)
50	140	3700	28	800
75	210	4100	35	950
100	265	4600	60	1100
125	315	4800	66	1300
150	375	5000	80	1530



Pictured:
ATS103-3636
on EMD 16-645
generator set

Accessories

PB1500	Push Button
RV1500	1.5" Relay Valve
YS1500	1.5" Y Strainer
BV1500	1.5" Ball Valve



Always use accessories equal to the size of the inlet or slightly larger to ensure proper flow characteristics.

Engine Selection Guide

Caterpillar

3616	ATS103-0311
3618	ATS103-0311
G3616	ATS103-0311

CES Bessemer

GMX	ATS103-3635
GMSC	ATS103-3635

EMD

12-645	ATS103-3636
16-645	ATS103-3636
12-710	ATS103-3636
16-710	ATS103-3636
20-710	ATS103-3636

Fairbank Morse/Alco

16V-251	ATS103-3636
18V-251	ATS103-3636

Waukesha

12V-AT25D	ATS103-0311
12V-AT27G	ATS103-0311
16V-AT25G	ATS103-0311
16V-AT27G	ATS103-0311

* Some engines require multiple starters
This is only a partial list of engines.
Contact the factory for more information.